



Redhouse Park's



Own



Collection of



Lasting



Art

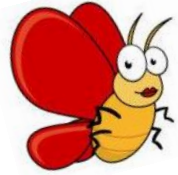


### SPOT THE BUG ON THE LAMPPOST.....

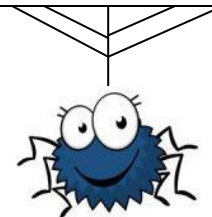


ROAD	LAMPPOST	BUG (common name and/or latin name)
Alder Court	1AC	
Alder Court	4AC	
Cape End	1CE	
Cape End	3CE	
Grove Corner	3GC	
Grove Corner	6GC	
Hambledines	1HD	
Hambledines	7HD	
High Thorn Piece	2HTP	
High Thorn Piece	8HTP	
Hill Pastures	2HP	
Hill Pastures	8HP	
Holmes Meadow	3HM	
Holmes Meadow	8HM	
Hopcrofts Meadow	3HM	
Hopcrofts Meadow	11HM	





<b>Mead Crescent</b>	<b>2MC</b>	
<b>Mead Crescent</b>	<b>4MC</b>	
<b>Millfield Gardens</b>	<b>1MG</b>	
<b>Millfield Gardens</b>	<b>4MG</b>	
<b>Pond Gate</b>	<b>1PG</b>	
<b>Pond Gate</b>	<b>5PG</b>	
<b>Rowditch Furlong</b>	<b>2RF</b>	
<b>Rowditch Furlong</b>	<b>9RF</b>	
<b>Rowditch Furlong</b>	<b>18RF</b>	
<b>Rowditch Furlong</b>	<b>24RF</b>	
<b>Sheep Way</b>	<b>1SW</b>	
<b>Sheep Way</b>	<b>7SW</b>	
<b>Top Fair Furlong</b>	<b>2TFF</b>	
<b>Top Fair Furlong</b>	<b>7TFF</b>	
<b>Top Fair Furlong</b>	<b>11TFF</b>	
<b>Top Fair Furlong</b>	<b>14TFF</b>	
<b>Top Fox Way</b>	<b>1TFW</b>	
<b>Top Fox Way</b>	<b>2TFW</b>	
<b>Wilds Cross</b>	<b>1WC</b>	
<b>Wilds Cross</b>	<b>6WC</b>	



**FIND OUT MORE ABOUT YOUR LOCAL WILDLIFE AT:**

**[Amateur Entomologists' Society](#)**